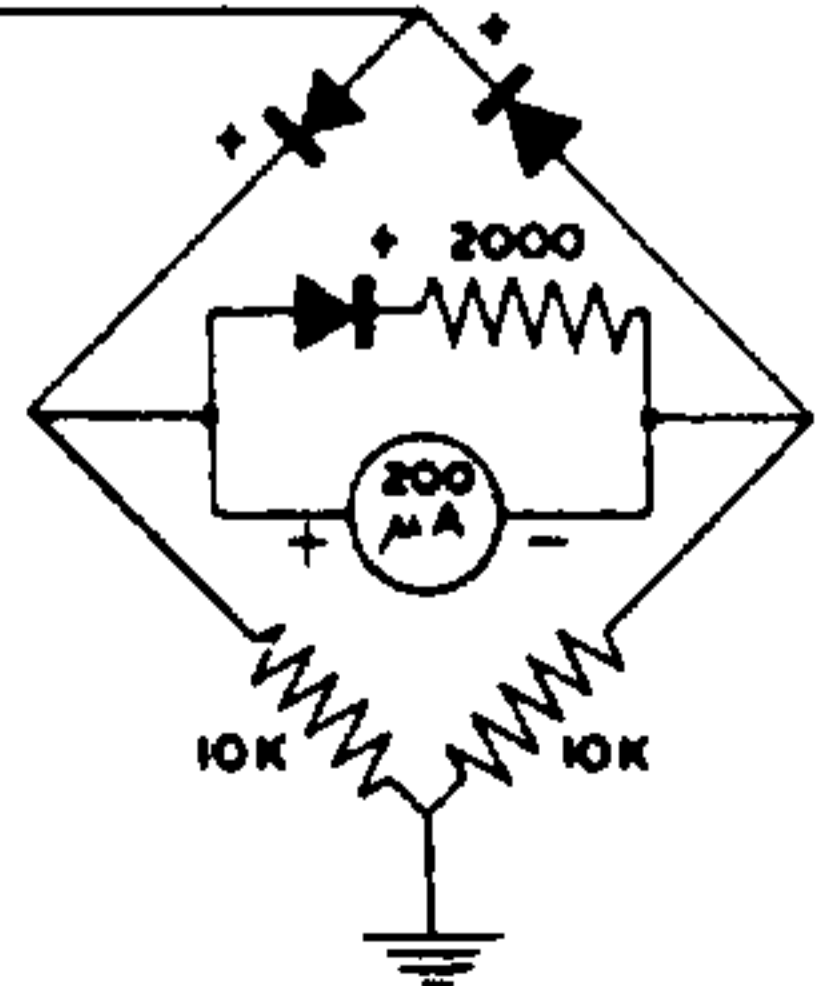


FULL SCALE OUTPUT VOLTAGE

ATTENUATOR

VALUES OF C		
MULTIPLIER	C <sub>1</sub>	C <sub>2</sub>
X1	.05	.5
X10	.005	.05
X100	500	.005
X1000	47	500



VALUES OF R							
DIAL	R <sub>1</sub>	DIAL	R <sub>1</sub>	DIAL	R <sub>2</sub>	DIAL	R <sub>2</sub>
10	100K	60	16.7K	1	1 Meg.	6	163K
20	50K	70	14.3K	2	510K	7	139K
30	33.3K	80	12.5K	3	330K	8	123K
40	25K	90	11.1K	4	240K	9	109K
50	20K	100	10.0K	5	184K	10	98K