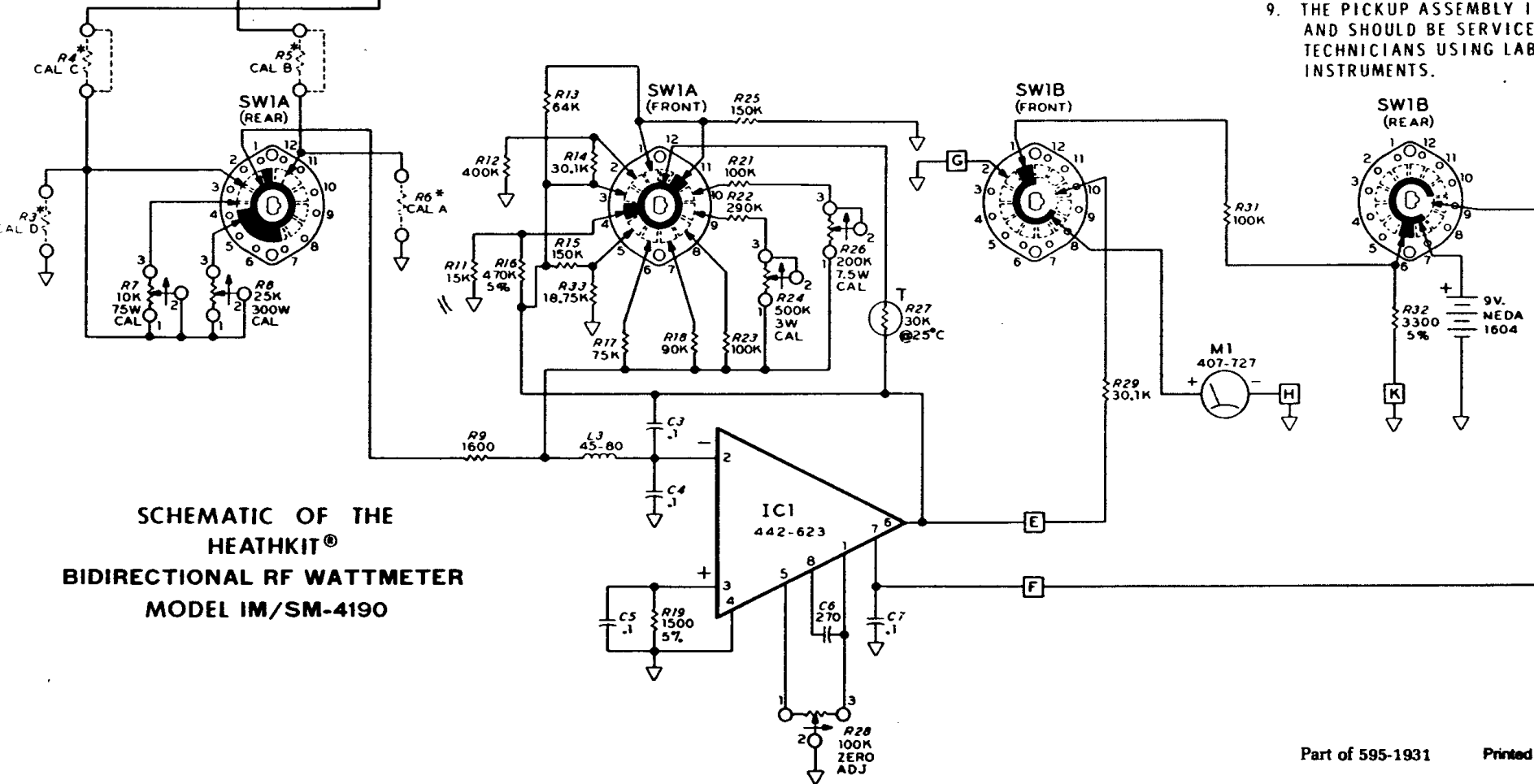
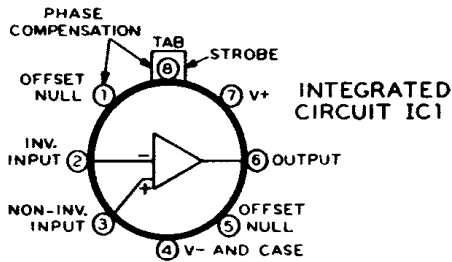
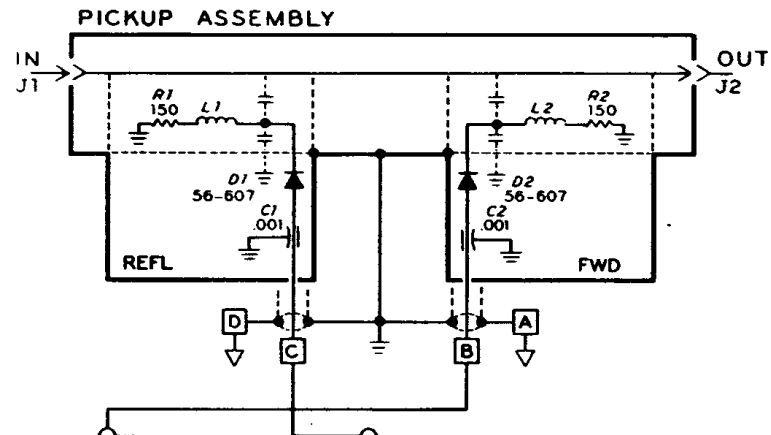


NOTES:

1. RESISTORS ARE 1/4-WATT, 1% TOLERANCE UNLESS OTHERWISE NOTED. (K=1000).
2. REFER TO THE "CIRCUIT BOARD X-RAY VIEW" FOR THE PHYSICAL LOCATION OF PARTS.

3. \perp THIS SYMBOL INDICATES A COMMON GROUND.
4. ∇ THIS SYMBOL INDICATES A CIRCUIT BOARD GROUND.
5. \square THIS SYMBOL INDICATES A CIRCUIT BOARD WIRE CONNECTION.
6. R_* INDICATES A 1500 Ω CALIBRATION RESISTOR OR JUMPER WIRE THAT MAY OR MAY NOT BE INSTALLED IN THE INDICATED LOCATION.
7. \curvearrowright THIS SYMBOL INDICATES A CLOCKWISE ROTATION OF A CONTROL.
8. SWITCH SW1, WITH WAFERS A AND B, IS SHOWN AS VIEWED FROM THE REAR OR CIRCUIT BOARD END. SWITCH IS IN THE "BATTERY CHECK" POSITION.
9. THE PICKUP ASSEMBLY IS FACTORY CALIBRATED AND SHOULD BE SERVICED ONLY BY QUALIFIED TECHNICIANS USING LABORATORY-STANDARD INSTRUMENTS.



**SCHEMATIC OF THE
HEATHKIT®
BIDIRECTIONAL RF WATTMETER
MODEL IM/SM-4190**