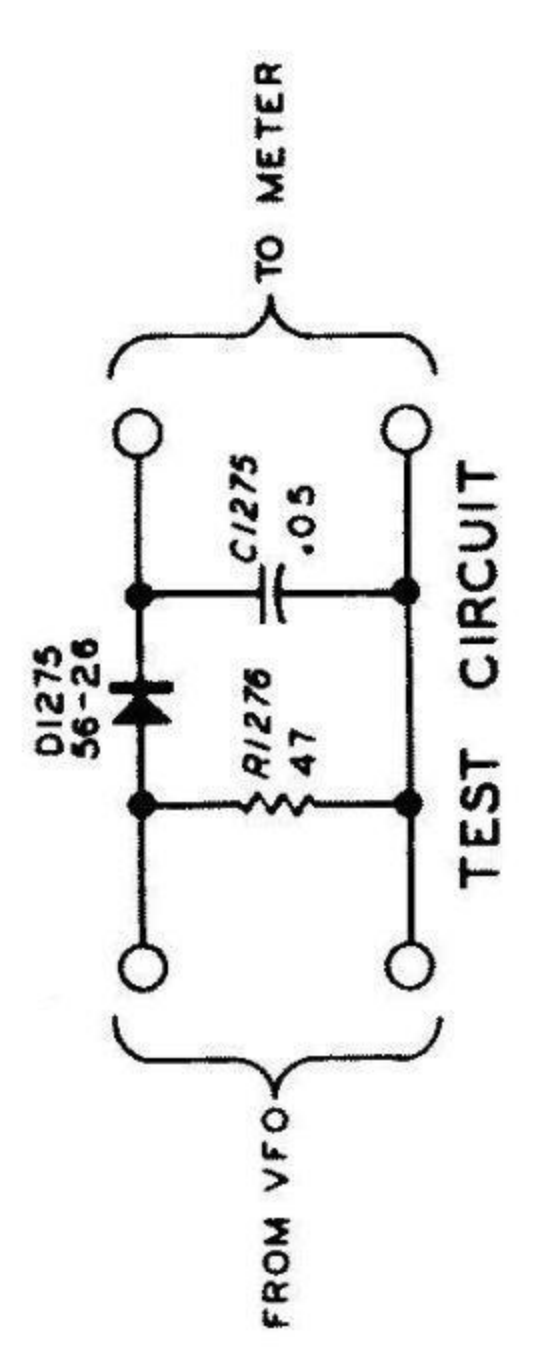


NOTES:

1. ALL RESISTORS ARE 1/2-WATT AND HAVE A TOLERANCE OF 5%.
2. CAPACITOR VALUES LESS THAN 1 ARE IN μF (MICROFARADS). CAPACITOR VALUES GREATER THAN 1 ARE IN PF (PICOFARADS) UNLESS OTHERWISE NOTED.
3. THIS SYMBOL INDICATES A DC VOLTAGE MEASURED WITH A HIGH INPUT IMPEDANCE VOLTMETER FROM THE POINT INDICATED TO CHASSIS GROUND.
4. THIS SYMBOL INDICATES A DC VOLTAGE MEASURED WITH THE T/R (SW1276D), AND REMOTE ON (SW1275A), AND XTAL 1 (SW1275C) PUSHBUTTONS DEPRESSED.
5. THIS SYMBOL INDICATES A DC VOLTAGE MEASURED WITH THE T/R (SW1276D), XTAL ON (SW1275A), AND XTAL 1 (SW1275C) PUSHBUTTONS DEPRESSED.
6. THIS SYMBOL INDICATES A CHASSIS GROUND.
7. THIS SYMBOL INDICATES A CIRCUIT BOARD GROUND.
8. THIS SYMBOL INDICATES A SOLDERED CONNECTION TO A CIRCUIT BOARD.
9. REFER TO THE "CHASSIS PHOTOGRAPHS" AND "CIRCUIT BOARD X-RAY VIEWS" FOR THE PHYSICAL LOCATION OF PARTS.
10. THE PUSHBUTTONS ARE SHOWN PUSHED SO THE REMOTE VFO IS CONTROLLING THE TRANSMITTER AND THE MAIN (TRANSMITTER) VFO IS CONTROLLING THE RECEIVER.



SCHEMATIC OF THE
HEATHKIT®
REMOTE VFO
MODEL SB-644A

Part of 595-2055-02

Copyright © 1978
Heath Company
All Rights Reserved
Printed in the United States of America