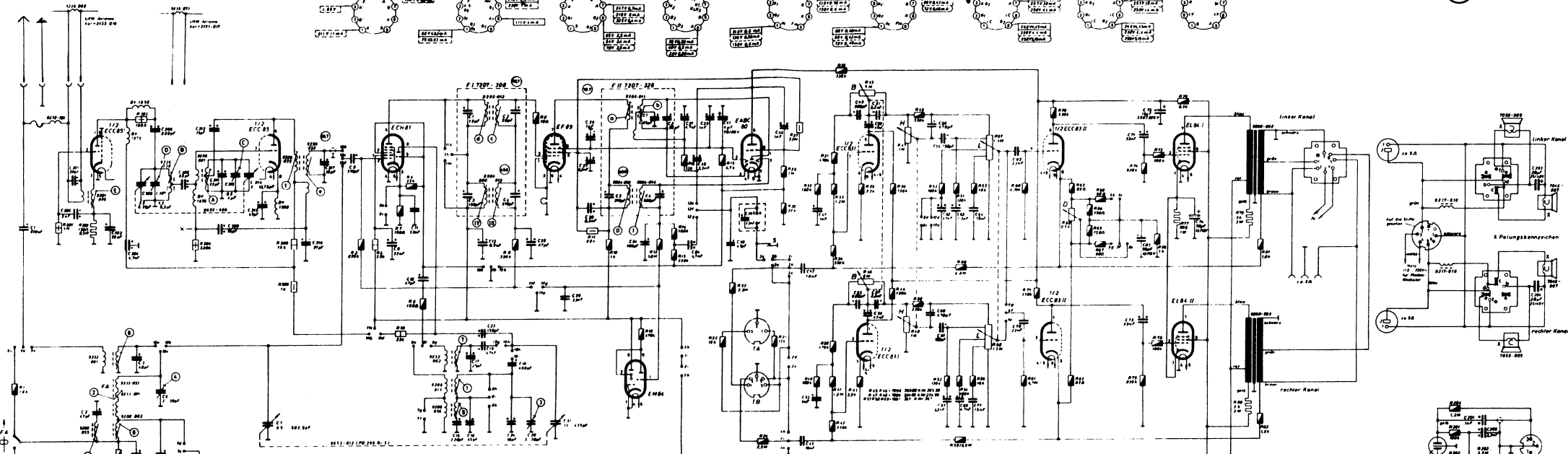
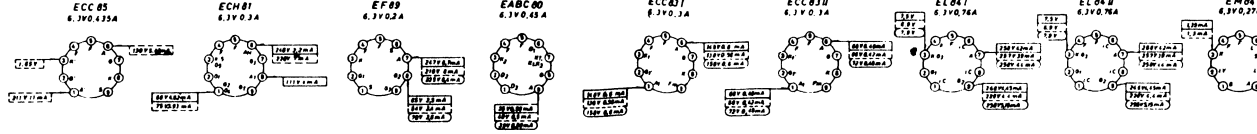


UKW-Antennenausführungen

SO 121 a SO 132 a



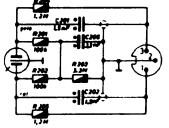
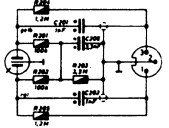
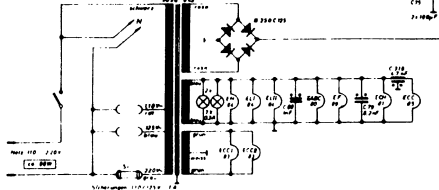
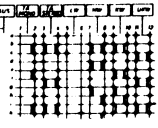
SO 121 a

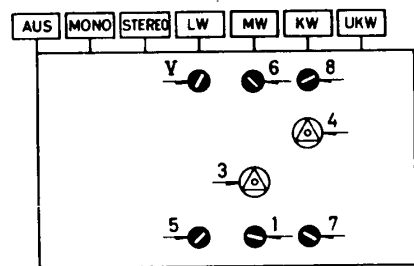
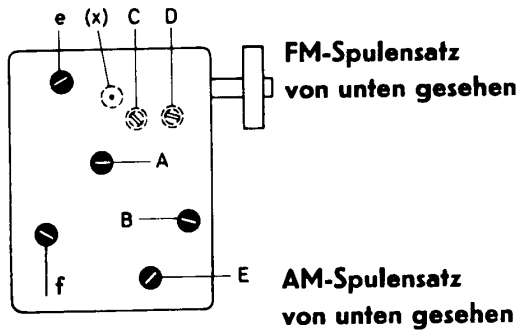
SO 132 a

- 70-1 - Aufnahme Mono
- 2 - Regler
- 3 - Wiedergabe Mono
- 4 - Aufnahme Stereo links
- 5 - Wiedergabe Stereo rechts
- 6 - Aufnahme Stereo rechts
- 7 - Regler
- 8 - Wiedergabe Mono

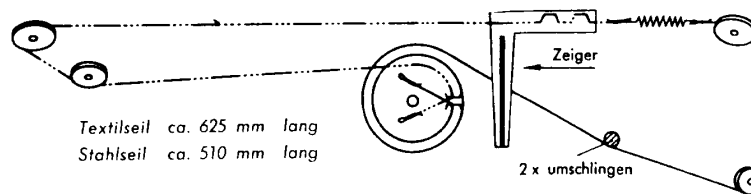
Wartungsbereich
 LW 145 150 kHz
 MW 510 1620 kHz
 UKW 87 100 MHz
 KW 53 16 MHz

7612-080-88 K/N 080-88

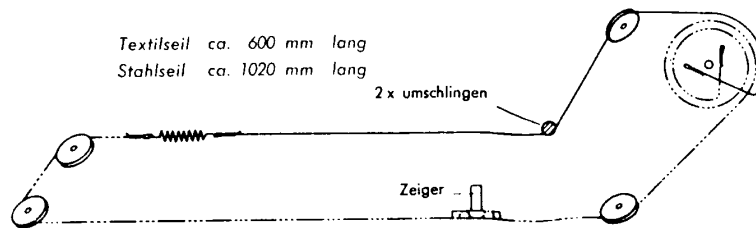




AM-Antrieb von der Skalseite gesehen



FM-Antrieb von der Skalseite gesehen



SO 121 a
GRUNDIG
SO 132 a

Teilansicht des Chassis von oben

