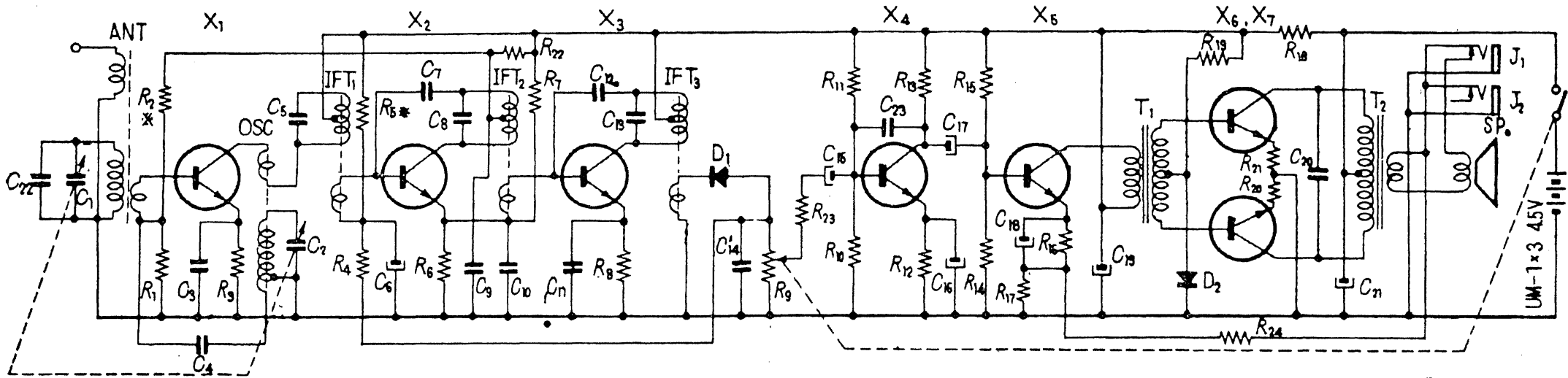


# SONY

# CIRCUIT DIAGRAM FOR TR-712



C <sub>1</sub>	Tuning Capacitor	C <sub>11</sub>	0.05 μF	C <sub>21</sub>	100 μF 6 V	R <sub>1</sub>	5.6 KΩ	R <sub>11</sub>	5 Ω	X <sub>1</sub>	IF <sub>1</sub> 2T7	OSC	Oscillator Coil
C <sub>2</sub>		C <sub>17</sub>	2 pF	C <sub>27</sub>	3 pF	R <sub>2</sub>	330 Ω	R <sub>12</sub>	60 Ω	X <sub>2</sub>	IF <sub>2</sub> 2T7	IFT <sub>1</sub>	I.F. Trans.
C <sub>3</sub>	0.005 μF	C <sub>14</sub>	200 pF	C <sub>24</sub>	0.005 μF	R <sub>3</sub>	VR. with Switch 5 KΩ	R <sub>13</sub>	22 KΩ	X <sub>3</sub>	AF <sub>1</sub> 2T6	IFT <sub>2</sub>	I.F. Trans.
C <sub>4</sub>	0.01 μF	C <sub>15</sub>	0.05 μF			R <sub>4</sub>	5.6 KΩ	R <sub>14</sub>	5 Ω	X <sub>4</sub>	AF <sub>2</sub> 2T6	IFT <sub>3</sub>	I.F. Trans.
C <sub>5</sub>	200 pF	C <sub>16</sub>	10 μF 3 V	R <sub>5</sub>	22 KΩ	R <sub>6</sub>	22 KΩ	R <sub>15</sub>	5 Ω	X <sub>5</sub>	PA 2T8 or 2T6	T <sub>1</sub>	Input Trans.
C <sub>6</sub>	10 μF 3 V	C <sub>18</sub>	30 μF 3 V	R <sub>7</sub>	10 KΩ	R <sub>8</sub>	560 Ω	R <sub>16</sub>	5.6 KΩ	X <sub>6</sub>	PA 2T8 or 2T6	T <sub>2</sub>	Output Trans.
C <sub>7</sub>	3 pF	C <sub>19</sub>	10 μF 3 V	R <sub>9</sub>	3.3 KΩ	R <sub>10</sub>	1 KΩ	R <sub>17</sub>	1 KΩ	D	Diode 1T23C	SP	P. D. Speaker 12 cm 8 Ω
C <sub>8</sub>	200 pF	C <sub>20</sub>	30 μF 3 V	R <sub>11</sub>	5.6 KΩ	R <sub>12</sub>	5.6 KΩ	R <sub>18</sub>	220 Ω	D <sub>1</sub>	Varistor 1T51	J <sub>1</sub>	Jack
C <sub>9</sub>	10 μF 6 V	C <sub>21</sub>	100 μF 6 V	R <sub>13</sub>	30 KΩ	R <sub>14</sub>	10 KΩ					J <sub>2</sub>	Jack
C <sub>10</sub>	0.05 μF	C <sub>22</sub>	0.1 μF	R <sub>15</sub>	560 Ω	R <sub>16</sub>	220 Ω	X <sub>1</sub>	Conv. 2T7	ANT.	Antenna Coil		

SONY CORPORATION

No. : ■ Adjusting Resistors