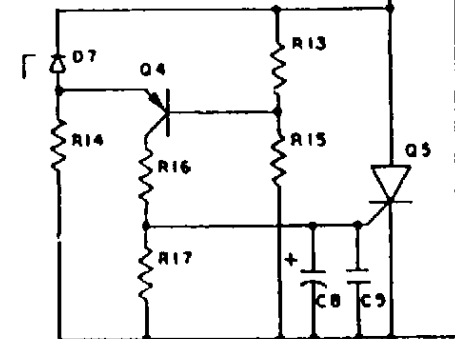


- |                      |                               |
|----------------------|-------------------------------|
| C1- 42,000 $\mu$ 25V | R1- 2.4 $\Omega$ 5% 5W C.C.   |
| C2- 470 $\mu$ 35V    | R2- 33 $\Omega$ 5% 5W C.C.    |
| C3- .01 $\mu$ 50V    | R3- 300 $\Omega$ 5% 25W C.F.  |
| C4- .001 $\mu$ 50V   | R4- 100 $\Omega$              |
| C5, C8- 22 $\mu$ 16V | R5- 2.2K                      |
| C6- 100 $\mu$ 25V    | R6- 300 $\Omega$              |
| C7- 2,200 $\mu$ 16V  | R7- 2.2K                      |
| C9- .1 $\mu$ 50V     | R8- 100 $\Omega$ 5% 25W C.F.  |
| D1, D2, D6- 1N4002   | R9- 1K 20% 5W C.P.            |
| D3, D4- MR751        | R10- 5.1K 5% 25W C.F.         |
| D5- 1N4148           | R11- 3.9K                     |
| D7- 1N752A           | R12- 3K                       |
| DS1- 115V NEON       | R13- 5.6K                     |
| F1- 21 250V 3AG      | R14- 470 $\Omega$             |
| IC1- LM723           | R15- 9.1K                     |
| P1- LINE CORD 18GA-3 | R16- 200 $\Omega$ 5% 25W C.F. |
| Q1- RCA29            | R17- 1K 5% 25W C.F.           |
| Q2- 2N3771           | R18- 43 $\Omega$ 1/2W 5% C.F. |
| Q3- 2N3904           | S1- SPST TOGGLE SWITCH        |
| Q4- 2N3906           | T1- ASTRON 8006 TRANSFORMER   |
| Q5- 2N6505           |                               |

Pin No	No Load	7Amp Load
2	13.2V	14.2V
3	13.7	13.7
4	7.0	7.0
5	7.0	7.0
10	14.7	16.1
11	28.1	23.3
12	29.0	24.2
13	16.0	17.2



<b>ASTRON CORPORATION</b> TUSTIN, CALIFORNIA		
SCALE: _____	APPROVED BY: <i>Elmer M. Gregory</i>	DRAWN BY: EMG
DATE: 10-12-94		REVISED: _____
<b>RS-7A SCHEMATIC</b>		
DESIGNED BY: _____		