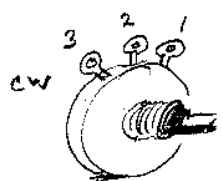
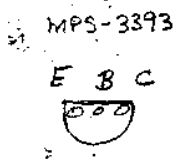
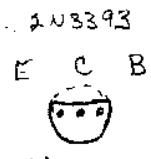
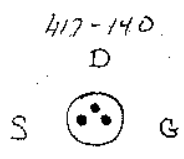
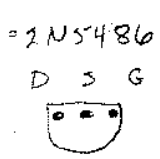
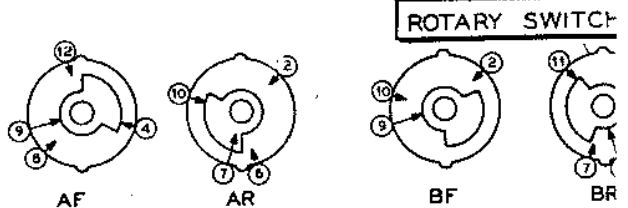
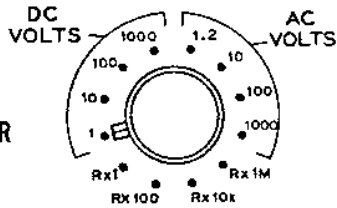
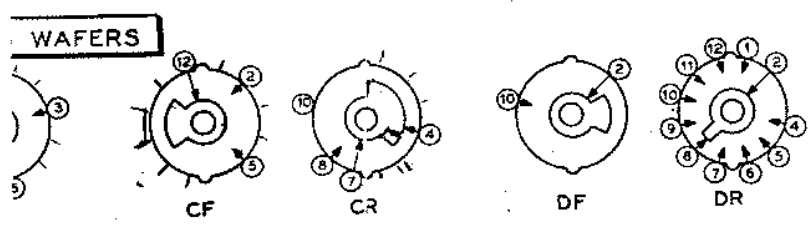
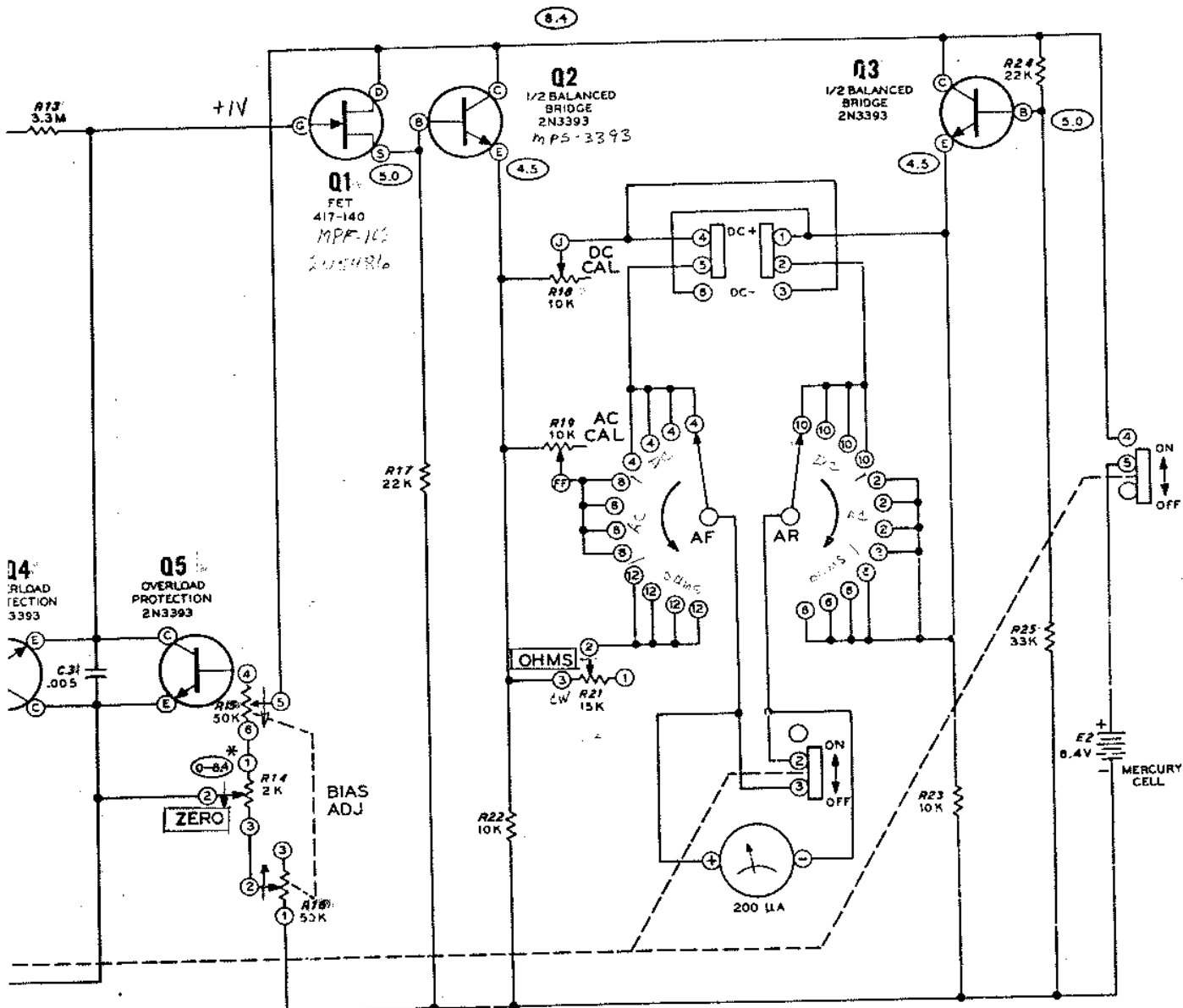


**SCHEMATIC OF THE
HEATHKIT®
UTILITY SOLID STATE VOLTMETER
MODEL IM-17**



Bottom Views

DRAIN + SOURCE MAY BE INTERCHANGED



NOTES

- F = FRONT, R = REAR
 ROTARY SWITCH IS SHOWN IN 1 VOLT DC POSITION
 ARROWS INDICATE CW ROTATION
- DC SWITCH SHOWN IN "DC," POSITION
 ON-OFF SWITCH SHOWN IN "OFF" POSITION
- ALL CAPACITOR VALUES IN μ F
- ALL RESISTORS ARE 1/2 WATT UNLESS MARKED OTHERWISE
 RESISTOR VALUES ARE IN OHMS (K = 1000, M = 1,000,000)
- = DC VOLTS TO NEGATIVE SIDE OF E-2 MEASURED WITH AN 11 MEGOHM INPUT IMPEDANCE ELECTRONIC READINGS MAY VARY BY 10%.
- RESISTORS NOT NUMBERED CONSECUTIVELY.
- * DEPENDS ON SETTING OF BIAS ADJ AND ZERO CONTROLS.

PC MOUNTED COMPONENT