

**SCHEMATIC OF THE
HEATHKIT®**

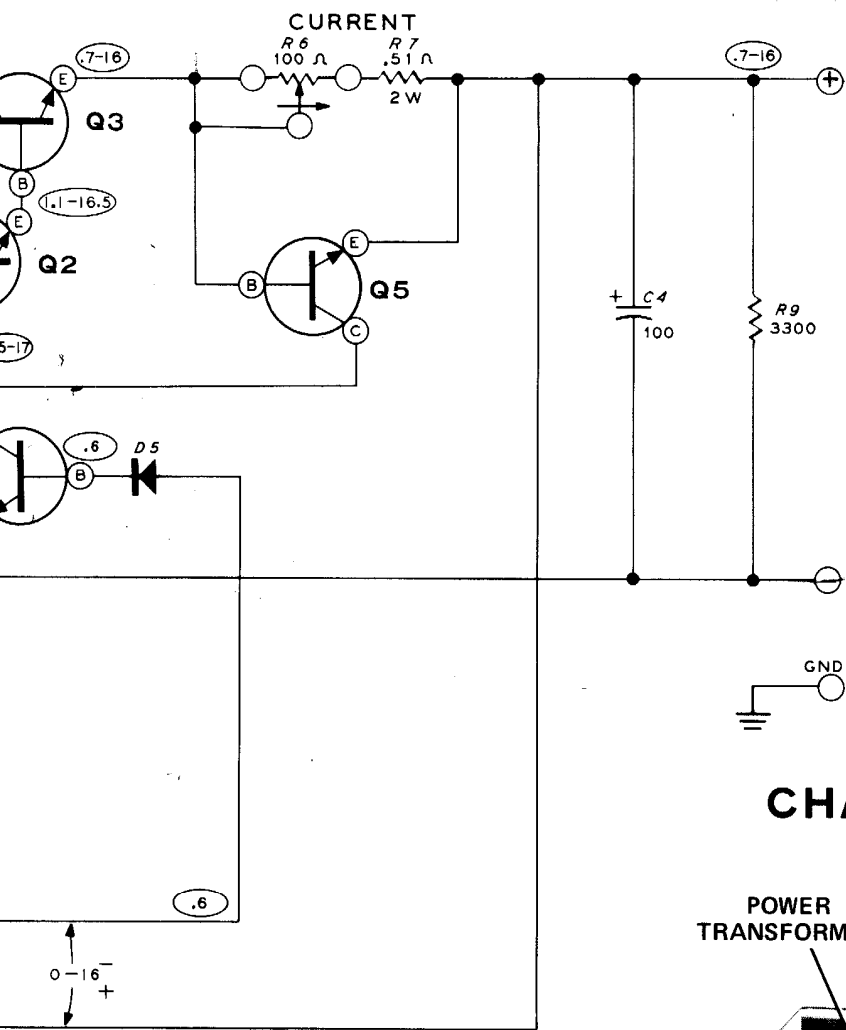
**1-15 VDC REGULATED POWER SUPPLY
MODEL IP-2728**

NOTES:

1. ALL RESISTORS ARE 1/2 WATT UNLESS OTHERWISE MARKED.
2. ALL CAPACITORS ARE IN μF .
3. ○ INDICATES A DC VOLTAGE MEASUREMENT FROM POINT INDICATED TO NEGATIVE (-) OUTPUT TERMINAL. WHERE TWO VOLTAGES ARE SHOWN, THE VOLTAGE PRESENT DEPENDS UPON THE SETTING OF THE VOLTAGE CONTROL.
4. ALL VOLTAGES WERE MEASURED WITH NO LOAD ON THE OUTPUT TERMINALS AT 120 VAC 60 HZ INPUT.
5. VOLTAGE MEASUREMENTS WERE MADE WITH AN 11 MEGOHM INPUT VOLT-METER AND MAY VARY $\pm 10\%$.
6. ARROWS ON CONTROLS INDICATE CLOCKWISE ROTATION.
7. F1 IS: 3/16-AMP SLOW-BLOW FOR 120 VAC.
1/10-AMP SLOW-BLOW FOR 240 VAC.

Part of 595-1955-01

PART NO.	COMPONENT	MAY BE REPLACED WITH	BASE DIAGRAM
417-140	Q1	2N4304	
417-109	Q2	2N3566	
417-162	Q3	2N3055	
417-118	Q4, Q5	2N3393	
57-65	D1, D2, D3	SILICON, 100 PIV, 1A	
56-45	D4	SARKES VR20, 1WATT	
56-26	D5	1N191	
412-15	PL-1	NE2H	



CHASSIS PHOTOGRAPH

